

TC 700

Inspection unit Turbo Check 700

 **Loroch**
sharp solutions!



The Loroach TC 700 allows precision measurement of all the key data of HSS circular saw blades, which can then be saved with the relevant images, printed out or sent direct by e-mail.

The measuring principle is similar to that of a conventional profile projector except that measurements can be conducted with either transmitted or reflected light.

What's more, the camera can be swivelled to allow measurements in other planes. Measurements are performed with 20x/30x/60x magnification, either in transmitted mode (as in a profile projector) or incident mode. The maximum adjustable display detail is 14 x 8 mm (w x h) within 20 times magnification.

This measuring and documentation system is configured for a saw blade diameter of approx. 40 – 700 mm.

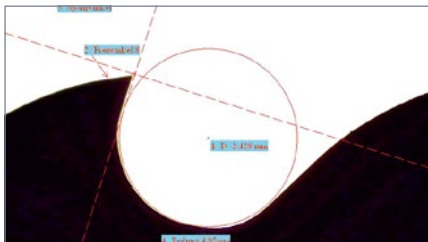
Possible measurements include:

- + Hook and clearance angle
- + Tooth height, tooth height difference, tooth pitch, tooth gullet radius, etc.
- + Chamfer angle and chamfer width
- + Depth and length of chip breaker groove

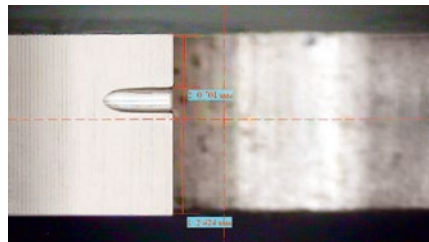
The TC 700 consists of a mechanical adjusting device with a high-quality video unit, 2 separate lamps each for transmitted and reflected light

measurements, a saw blade holding fixture, a Laptop unit (PC) with specially designed image processing software. The following languages can be selected by the operator: German, English, French, Italian, Spanish and Portuguese.

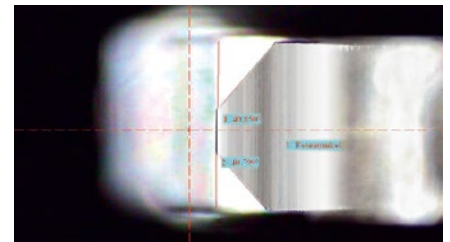
The Windows®-based image processing software is very easy to use, allowing the measured data to be saved directly in the image with accompanying notes. Alternatively, the images can be printed out in photographic quality or sent by e-mail.



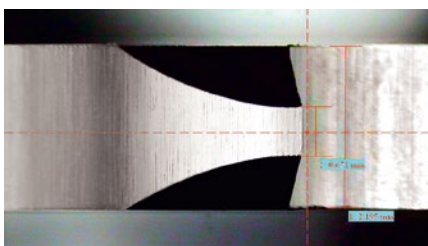
Inspection of tooth contour



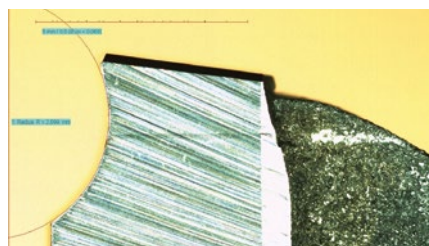
Inspection of chip breaker groove



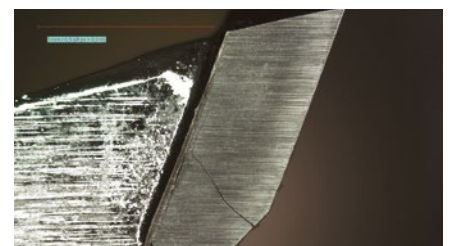
Inspection of chamfer angle



Inspection of chamfer-width/-symmetry



Inspection of chip breaker



Localizing cracks

Loroach GmbH – Ein Unternehmen der VOLLMER Gruppe
Josef-Loroach-Str. 1, 69509 Mörlenbach, Germany
phone +49 (0)6209 7159-50, fax +49 (0)6209 7159-38
info@loroach.de, www.loroach.de
Technical changes reserved | 190827-1

More Information
and product videos

Loroach
sharp solutions!

